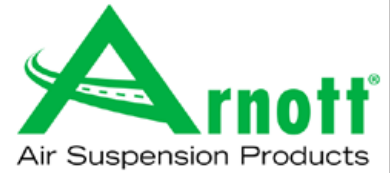


Installation Manual

C-2616 ARNOTT COIL SPRING CONVERSION KIT FOR 2007-2010 AUDI Q7 FOR 2003-2010 PORSCHE CAYENNE FOR 2004-2010 VW TOUAREG



Congratulations on your purchase of an Arnett® air suspension product. We at Arnett Incorporated are proud to offer a high quality product at the industry's most competitive pricing. Thank you for your confidence in us and our product.

Proper installation is essential to experience and appreciate the benefits of this system. Please take a moment to review these installation instructions before you begin to install these components on your vehicle. The removal and installation of air suspension products should only be performed by a fully qualified, ASE Certified, professional.

It is equally important to be aware of all necessary safety measures while installing your new Air Suspension System. This includes proper lifting and immobilizing of the vehicle and isolation of any stored energy to prevent personal injury or property damage.

"Engineered to Ride, Built to Last™"



WARNING: The air suspension system is under pressure (up to 10 bar, or 150 lbf/in). Verify pressure has been relieved and disconnect power to the air suspension system prior to disassembly. Do not allow dirt or grease to enter the system. Always wear standard protective hand, ear, and eye protection when servicing the air suspension system.

KIT CONTAINS:

PARTS LIST

P/N	QTY	DESCRIPTION
21-7026	1	ARNOTT FRONT COIL SPRING CONVERSION
21-7027	1	ARNOTT REAR COIL SPRING CONVERSION
21-7028	1	ACCESSORY KIT

Arnett® is committed to the quality of its products. If you have a question or problem with any Arnett product, please contact Arnett by calling **800-251-8993** during normal business hours or email techassistance@arnottinc.com

GENERAL INFORMATION:

Reading this manual signifies your agreement to the terms of the general release, waiver of liability, and hold harmless agreement, the full text of which is available at www.arnottinc.com.

- Not to be stored below 5°F (-15°C) and above 122°F (50°C).
- Avoid damage to air lines and cables.
- Removal and installation is only to be performed by fully qualified personnel.
- Use car manufacturer's diagnostic software.

CAUTION: *Damage to the vehicle and air suspension system can be incurred if work is carried out in a manner other than specified in the instructions or in a different sequence.*



To avoid the possibility of short circuits while working with electric components consult your owner's manual on how to disconnect your battery.



Consult your vehicle owner's manual, service manual, or car dealer for the correct jacking points on your vehicle and for additional care, safety and maintenance instructions. Under no circumstances should any work be completed underneath the vehicle if it is not adequately supported, as serious injuries and death can occur.

FRONT AIR STRUT REMOVAL

1. SET THE STEERING TO STRAIGHT AHEAD.
2. RAISE THE VEHICLE.
3. REMOVE THE FRONT WHEELS. (FIGURE 10-1)



FIGURE 10-1

4. REMOVE AIR LINE FITTING FROM THE AIR VALVE. (FIGURE 10-2)



FIGURE 10-2

5. REMOVE THE LOWER SHOCK-MOUNTING BOLT. (FIGURE 10-3)



FIGURE 10-3

6. REMOVE THE UPPER BALL JOINT FROM THE SPINDLE ASSEMBLY. (FIGURE 10-4)

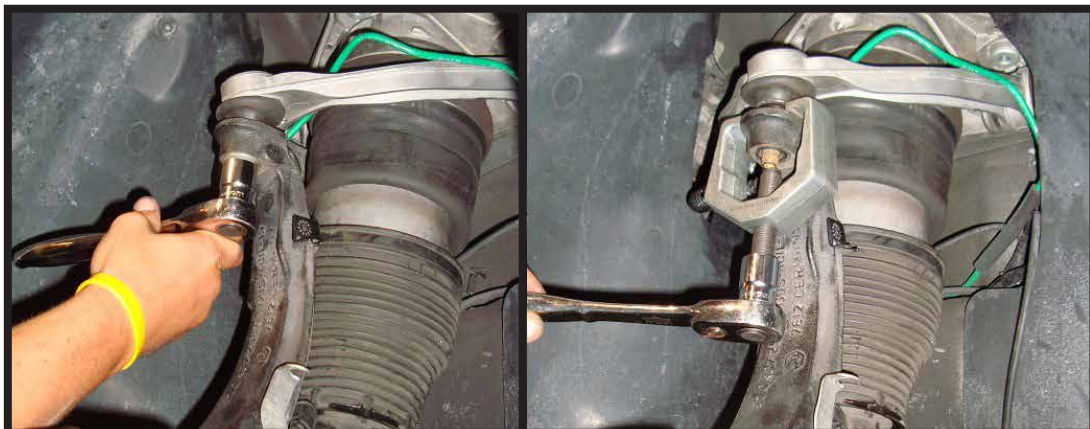


FIGURE 10-4

7. REMOVE THE SWAY BAR END LINK TO SHOCK MOUNTING BOLT. (FIGURE 10-5)



FIGURE 10-5

8. DISCONNECT THE RIDE HEIGHT SENSOR. (FIGURE 10-6)



FIGURE 10-6

9. LIFT HOOD AND REMOVE THE THREE (3) MOUNTING BOLTS THAT SECURE THE SHOCK. REMOVE PLASTIC COVER TO GAIN ACCESS TO THE THIRD BOLT. (FIGURE-10-7)



FIGURE 10-7

10. REMOVE SHOCK ASSEMBLY FROM THE VEHICLE. (FIGURE 10-8)



FIGURE 10-8



Air shock may be under pressure use caution when removing the air valve. Loosen the air valve slowly to let the pressure bleed out.

11. REMOVE THE FOUR (4) BOLTS SECURING THE AIR SPRING TO THE AIR SPRING MOUNT. (FIGURE 10-9)



FIGURE 10-9

12. REMOVAL COMPLETE.

FRONT COIL SPRING INSTALLATION



Tighten all nuts and bolts to manufacturer's specifications during the installation process.

1. INSTALL THE NEW FRONT COIL SPRING STRUT INTO THE TOP MOUNT AND SECURE THE MOUNTING BOLTS PROVIDED. (FIGURE 20-1)



FIGURE 20-1

2. INSTALL THE COIL SPRING STRUT INTO THE VEHICLE'S SHOCK CAVITY. (FIGURE 20-2)



FIGURE 20-2

3. REINSTALL THE LOWER STRUT MOUNTING BOLT AND SECURE. (FIGURE 20-3)



FIGURE 20-3

4. REINSTALL THE SWAY BAR END LINK BOLT AND SECURE. (FIGURE 20-4)



FIGURE 20-4

5. REINSTALL THE UPPER BALL JOINT TO THE SPINDLE ASSEMBLY AND SECURE. (FIGURE 20-5)



FIGURE 20-5

6. REINSTALL THE RIDE HEIGHT SENSOR. (FIGURE 20-6)



FIGURE 20-6

7. CONNECT AND REINSTALL THE ABS PLUG. (FIGURE 20-7)



FIGURE 20-7

8. SECURE THE AIR LINE AND SHOCK SENSOR WIRE IN A SUITABLE LOCATION. (FIGURE 20-8)



FIGURE 20-8

9. REINSTALL THE THREE TOP MOUNTING BOLTS. (FIGURE 20-9)



FIGURE 20-9

10. INSTALLATION COMPLETE.

REAR AIR STRUT REMOVAL

1. DISCONNECT THE TRAVEL LINKAGE SENSOR CONNECTOR. (FIGURE 30-1)



FIGURE 30-1

2. REMOVE THE FOUR UPPER SHOCK MOUNTING BOLTS. (FIGURE 30-2)



FIGURE 30-2

3. REMOVE THE LOWER SHOCK MOUNTING BOLT. (FIGURE 30-3)

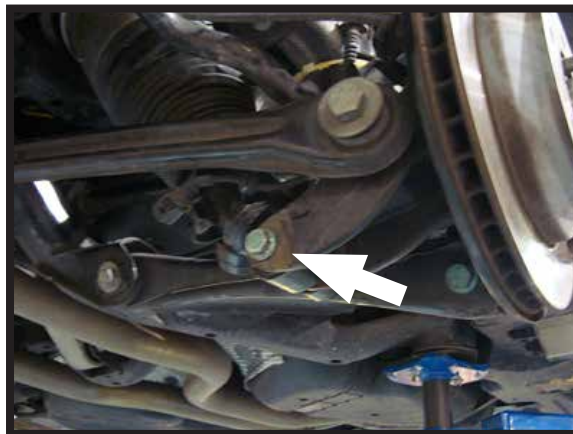


FIGURE 30-3

4. LOWER THE AIR STRUT AND DISCONNECT THE AIR HOSE FITTING FROM THE AIR VALVE. (FIGURE 30-4)



FIGURE 30-4



Air shock may be under pressure use caution when removing the air valve. Loosen the air valve slowly to let the pressure bleed out.

5. REMOVE AIR STRUT FROM THE VEHICLE. (FIGURE 30-5)



FIGURE 30-5

6. REMOVE THE FOUR (4) BOLTS AND THE AIR STRUT ASSEMBLY FROM THE TOP SHOCK MOUNT. (FIGURE 30-6)



FIGURE 30-6

7. REMOVAL COMPLETE.

REAR COIL SPRING INSTALLATION



Tighten all nuts and bolts to manufacturer's specifications during the installation process.

1. INSTALL THE NEW REAR COIL SPRING STRUT IN THE TOP MOUNT AND SECURE THE MOUNTING BOLTS PROVIDED. (FIGURE 40-1)



FIGURE 40-1

2. INSTALL THE COIL SPRING STRUT INTO THE REAR SHOCK CAVITY. (FIGURE 40-2)



FIGURE 40-2

3. REINSTALL THE FOUR (4) TOP MOUNTING BOLTS AND SECURE. (FIGURE 40-3)



FIGURE 40-3

4. ALIGN THE BOTTOM SHOCK MOUNT AND THE REAR SWAY BAR END LINK AND SECURE NUT AND BOLT. (FIGURE 40-4)



FIGURE 40-4

5. SECURE SHOCK SENSOR WIRE AND AIR LINE IN A SUITABLE LOCATION. (FIGURE 40-5)



FIGURE 40-5

6. INSTALLATION COMPLETE.

ELECTRONIC BYPASS MODULE INSTALLATION:

1. LOCATE AND REMOVE THE HATCH ON THE PASSENGER SIDE OF THE REAR CARGO AREA. (FIGURE 1A)



FIGURE 1A

2. LOCATE AND REMOVE THE VEHICLE'S AIR SUSPENSION CONTROL MODULE. (FIGURE 2B)



FIGURE 2B

3. REMOVE BOTH PLUGS (ONE LARGE AND ONE SMALL) AND SET CONTROL MODULE ASIDE. (FIGURE 3C)



FIGURE 3C

4. REMOVE THE PROTECTIVE CAP ON THE LARGER PLUG. LOCATE, CUT, AND STRIP THE ENDS OF THE WIRES MENTIONED IN THE CHART BELOW. (FIGURE 4D)

	FROM	TO	PIN#		
ELECTRONIC BYPASS MODULE	BLUE	ORANGE/BLACK STRIPE	61	VEHICLE'S WIRING HARNESS	
	RED	RED/YELLOW STRIPE	4		
	GREEN	ORANGE/BROWN STRIPE	81		
	BLACK	BROWN	1		
	<i>FOR VEHICLES EQUIPPED WITH AUTO LEVELING HEADLIGHTS:</i>				
	WHITE	RED/BLUE STRIPE	25		

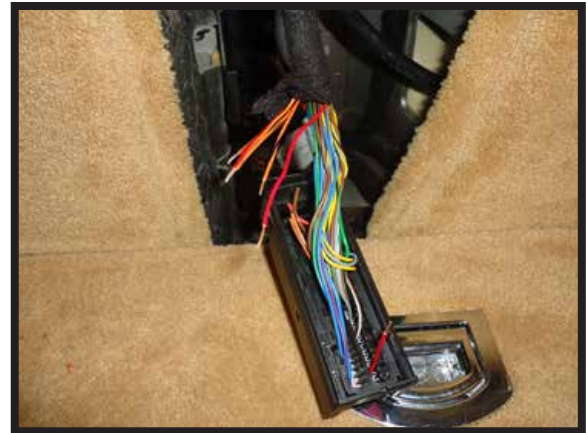


FIGURE 4D

5. CRIMP THE ELECTRONIC BYPASS MODULES WIRING HARNESS TO THE VEHICLES WIRING HARNESS USING THE WIRING CHART ABOVE. (FIGURE 5E)



FIGURE 5E

6. PLUG THE WIRING HARNESS INTO THE ELECTRONIC BYPASS MODULE. (FIGURE 6F)

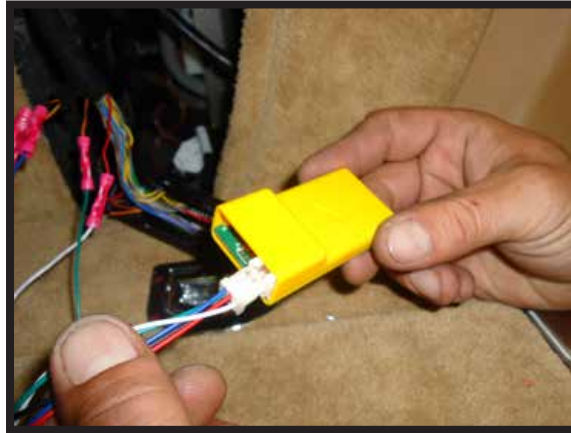


FIGURE 6F



Do not plug the vehicles wiring harness back into the air suspensions control module.

7. SECURE THE ELECTRONIC BYPASS MODULE IN A SUITABLE LOCATION. (FIGURE 7G)



FIGURE 7G

8. INSTALLATION COMPLETE.