



Congratulations on your selection to purchase an Arnott Air Suspension System. We at Arnott Air Suspension Systems are proud to offer a high quality product at the industries most competitive pricing. Thank you for your confidence in us and our product.

Proper installation is essential to experience and appreciate the benefits of this system. Please take a moment to review these installation instructions before you begin to install this system on your vehicle.

It is equally important to be aware of all necessary safety measures while installing your new Air Ride System. This includes proper lifting and immobilizing of the vehicle and isolation of any stored energy to prevent personal injury or property damage.

Engineered to Ride, Built to last”



WARNING: The air suspension system is under pressure (up to 10 bar, or 150 lbf/in) verify pressure has been relieved and disconnect power to the air ride system prior to disassembly. Do not allow dirt or grease to enter the system. Always wear standard protective hand, ear, and eye protection when servicing the air suspension system.

Kit contains:

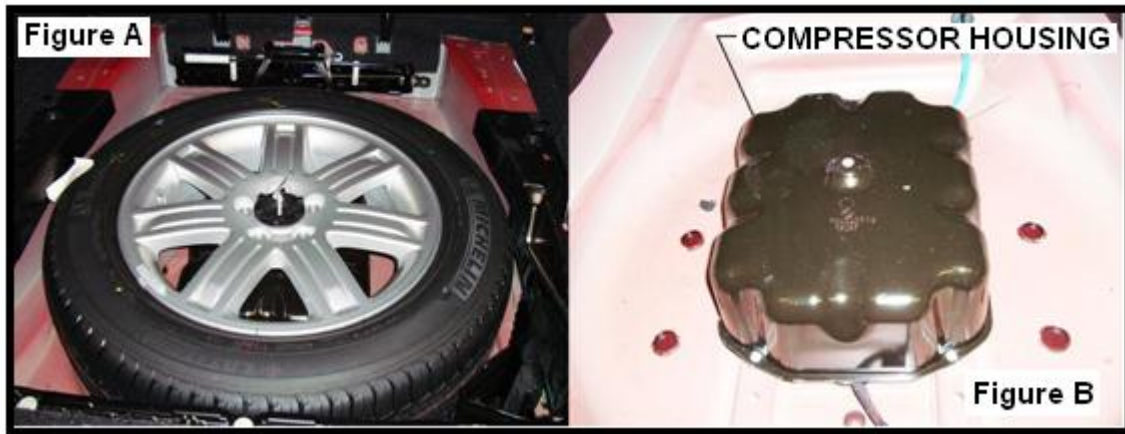
PARTS LIST		
P/N	QTY	DESCRIPTION
14-4702	1	COMPRESSOR
29-4256	1	CABLE BRACKET
29-2617	1	8" WIRE TIE
14-4271	1	AIR TUBE REMOVAL TOOL

**NOT SUPPLIED BUT REQUIRED TO COMPLETE COMPRESSOR INSTALLATION:
2 INSULATED BUTT CONNECTORS**

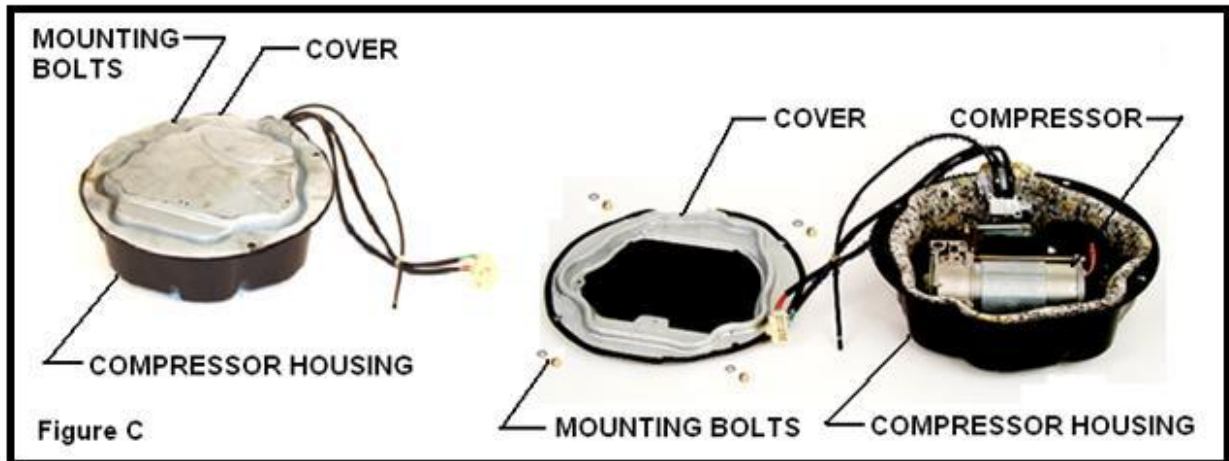


Compressor Removal:

1. Remove spare tire for access to compressor housing (Figure A).
2. Disconnect air tube and electrical connector from compressor to vehicle. Remove four (4) bolts holding compressor housing to vehicle (bolts also hold cover and housing together) (figure B).

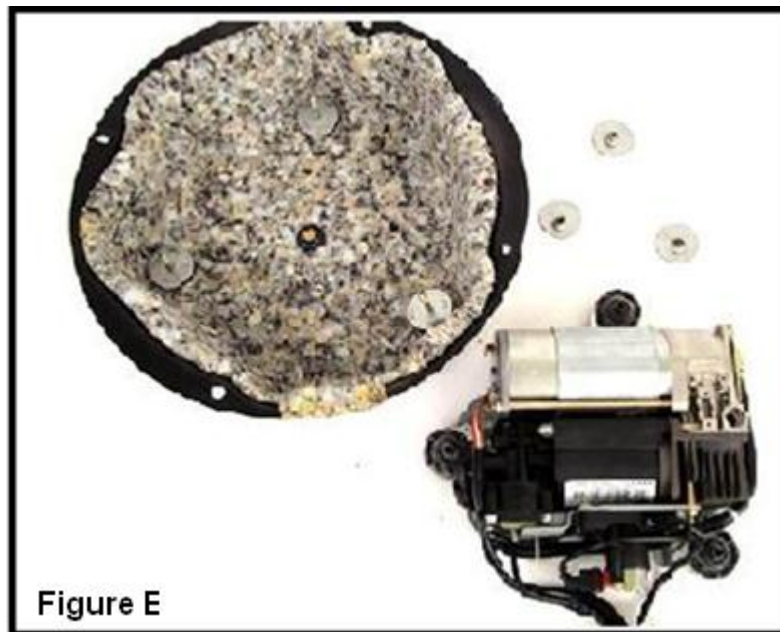
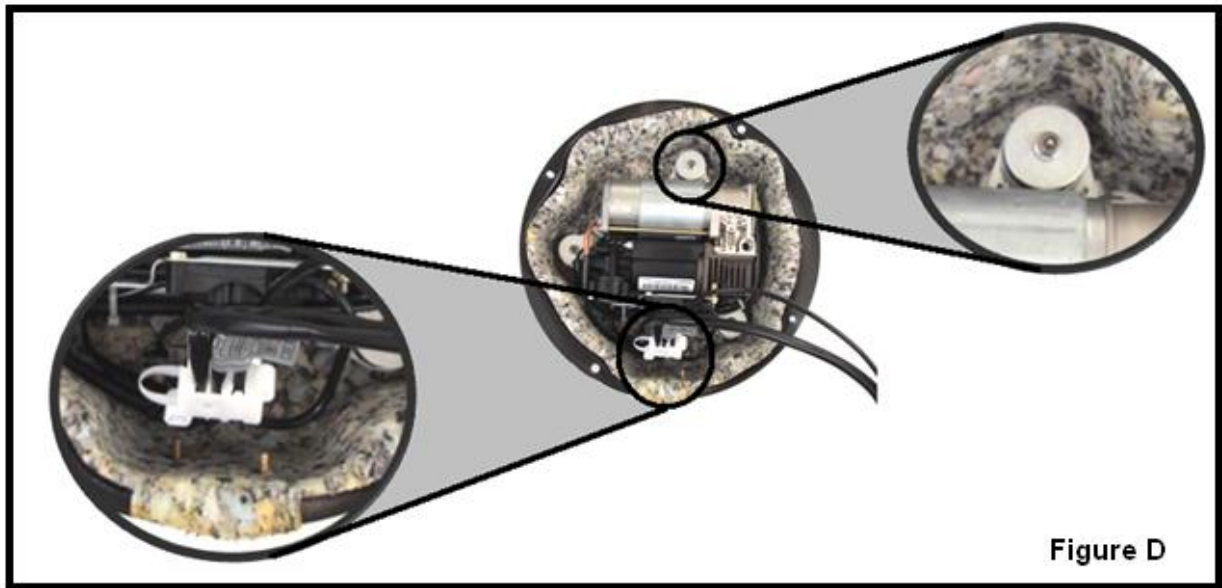


3. Remove cover from housing to expose the compressor (Cover is held on with the same mounting bolts that hold the compressor housing to the vehicle) (Figure C).





4. Remove the cable clamp from housing, remove from cables and air tube and discard (new cable clamp supplied) (Figure D).
5. Remove the three (3) mounting nuts and washers and remove compressor assembly from housing (Figure D and Figure E).





6. Loosen sensor retaining screw (located on backside of compressor) (Figure F).

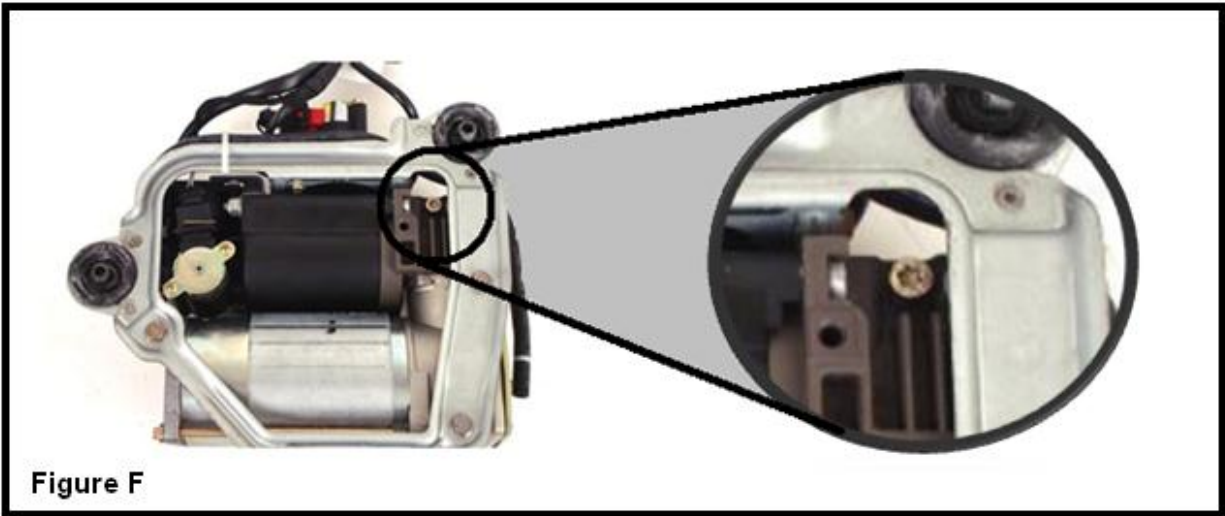


Figure F

NOTE: TO RELEASE AIR TUBE(S) USE AIR TUBE REMOVAL TOOL (14-4271). SLIDE REMOVAL TOOL OVER THE TUBE AND PRESS DOWN ON THE QUICK RELEASE FITTING, PULL OUT AIR TUBE(S).

7. Disconnect the air tube using tool 14-4271 and remove sensor (Figure G).

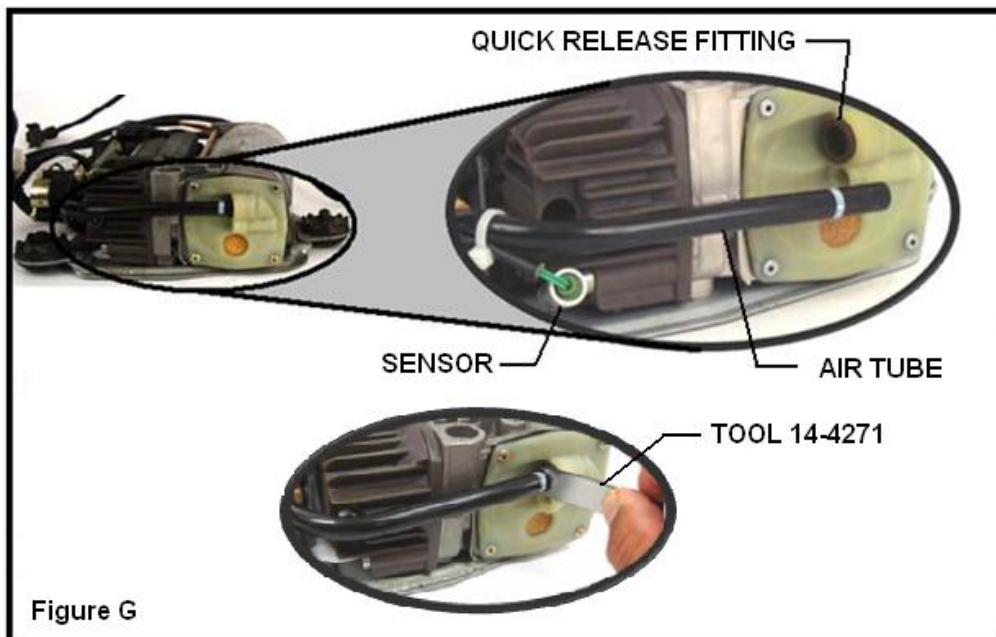


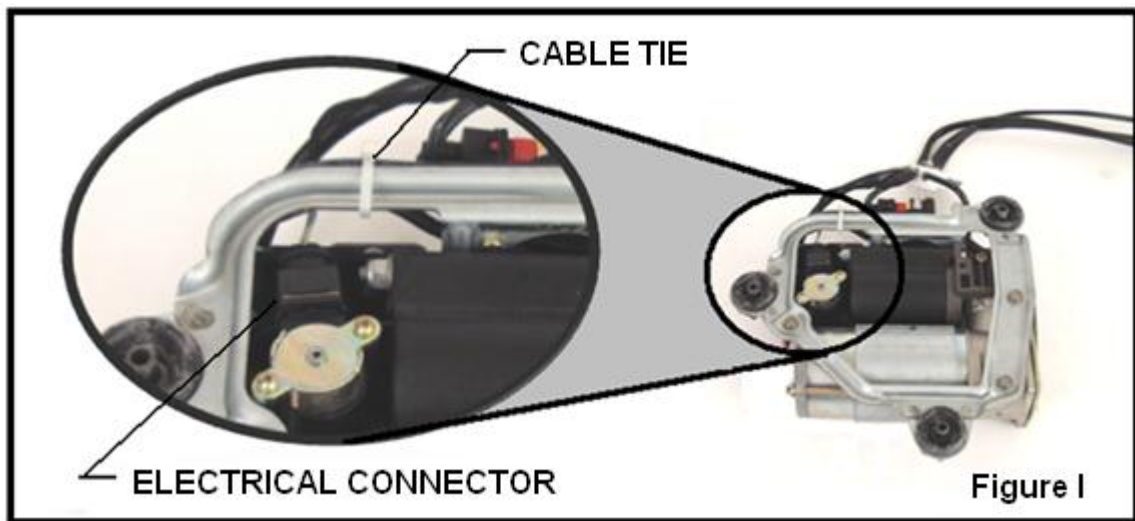
Figure G



8. Disconnect two (2) air tubes using tool 14-4271. The larger air tube is removed with the 90 degree elbow (Figure H).

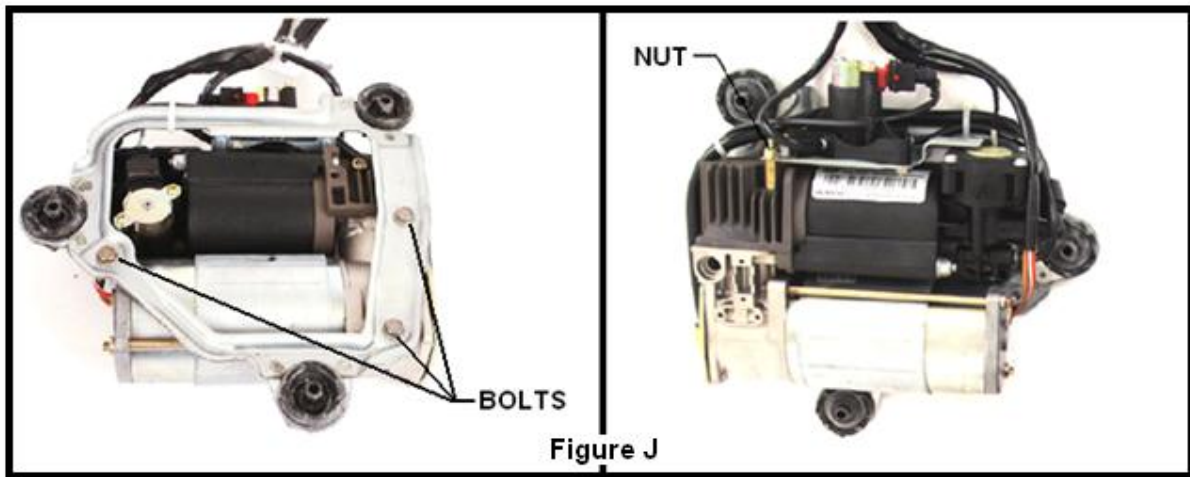


9. Disconnect electrical connector and remove cable tie (Figure I).

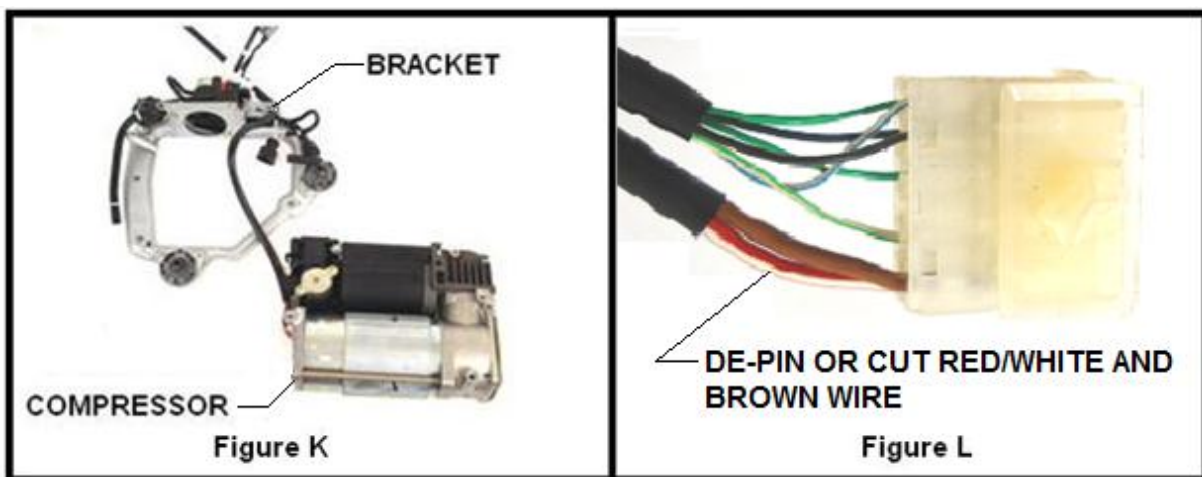




10. Remove 3 bolts (back side) and 1 nut (front side) that hold compressor to the compressor mounting bracket (Figure J).



11. Remove compressor from bracket (figure K).
12. Remove the red/white and brown wire/pins from the connector. If of the wires cannot be removed from the connector it will be necessary to cut the red/white and brown wires of the old compressor near the connector (make sure to leave enough wire at the connector to add the new butt splices of the new compressor) (Figure L).



13. Removal complete. Reinstall new compressor in the reverse order of removal.